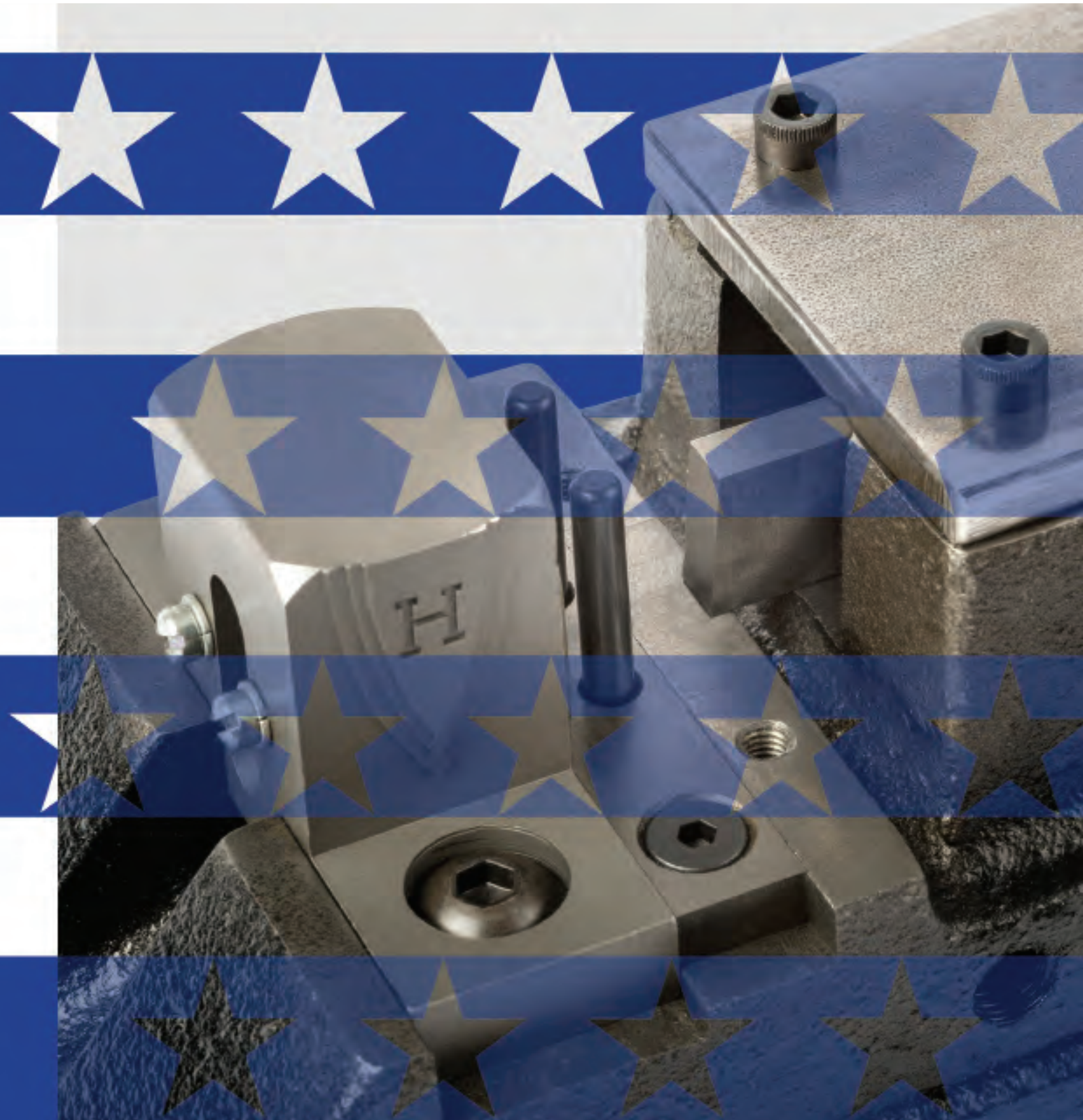


EQUIPMENT SERIES



TRADITION CONTINUES...

To better serve the North American market: sales, warehouse, and production functions have been centralized to offer best application consulting in combination with tailor-made steel rule products and our well-known die-making equipment.



TABLE OF CONTENTS

Bender Series and Accessories Pages 5 – 12

 Bender Series Page 6

 Starter Kits Page 7

 Standard Dies Pages 8 – 9

 Special “M” Series Dies Page 10

 Mandrel Sets and Slot Tools Pages 11 – 12

Cutting, Miter, and Notching Series Pages 13 – 16

 Cutter Series Page 14

 Miter Series Page 15

 Notching Series Page 16

Cutawl Saw and Power Assist Series Pages 17 – 19

 Cutawl Saw Page 18

 Power Assist Series Page 19

Replacement Parts and Drawings Pages 20 – 28



CONTACT AND SALES INFORMATION

INSIDE SALES

Phone: 1-800-344-7138

Adam Brewster – Inside Sales Manager
adam.brewster@voestalpine.com

Dee Berardinelli – Inside Sales
dee.berardinelli@voestalpine.com

Chad Sledz – Inside Sales
chad.sledz@voestalpine.com

OUTSIDE SALES

Steve Young – Sales Director
steve.young@voestalpine.com

Josh Jones – Technical Manager
josh.jones@voestalpine.com

Harold Burkhart – Midwest Sales
harold.burkhart@voestalpine.com

James Gossage – South East Sales
james.gossage@voestalpine.com

www.helmold.com

BENDER SERIES & ACCESSORIES



BENDER SERIES



Model:	EZ Bender Bendall
Maximum pointage	3 point
Maximum height	1" / 25.4 mm
Machine size (LxWxH)	30.5" x 4.375" x 6.750"
Shipping Size	44" x 8" x 8"
Net weight	46 lbs.
Shipping weight	69 lbs.



Model:	EZ Heavy Duty Bender
Maximum pointage	6 point
Maximum height	2" / 50.8 mm
Machine size (LxWxH)	40" x 5" x 6"
Shipping Size	44" x 8" x 8"
Net weight	50 lbs.
Shipping weight	72 lbs.

AVAILABLE STARTER KITS

Our starter kits include the most frequently used bending die sets.

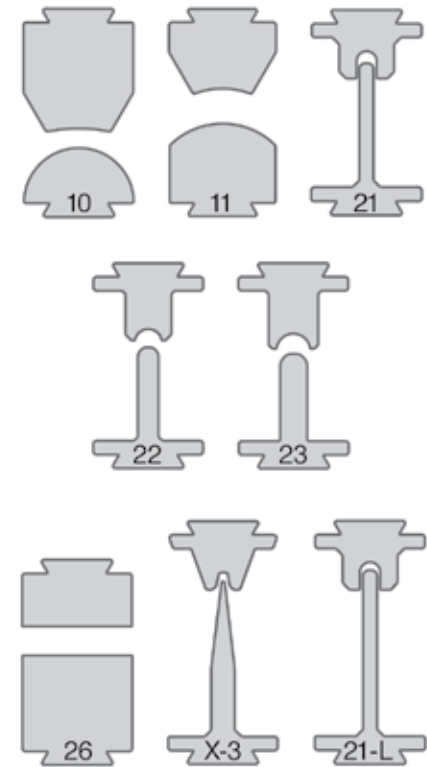
Bending dies are available in 1", 1-1/4", 1-1/2", & 2"

Most Common Accessories in Corrugated Die Shops

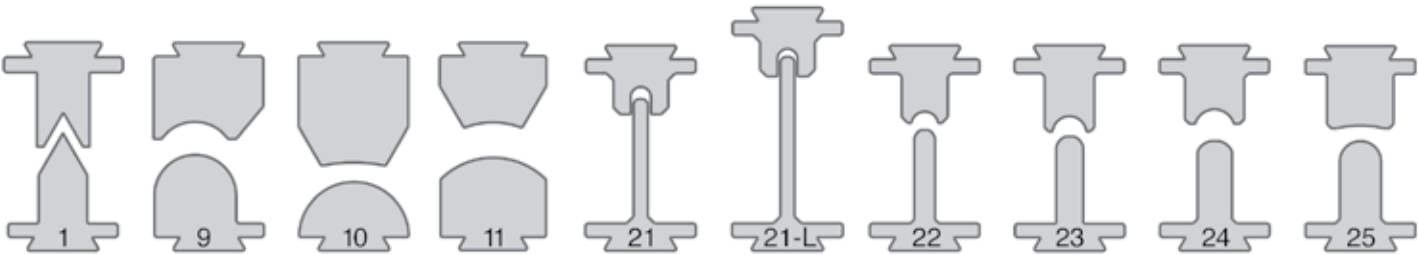
Fractional Slot-Bending Die Sets



Specifications for slot tools and mandrels:
Available in 1/8" to 9/16" in 1/16" increments
C = 4pt Center Face
F = 3pt Center Face
R = 4pt Side Face

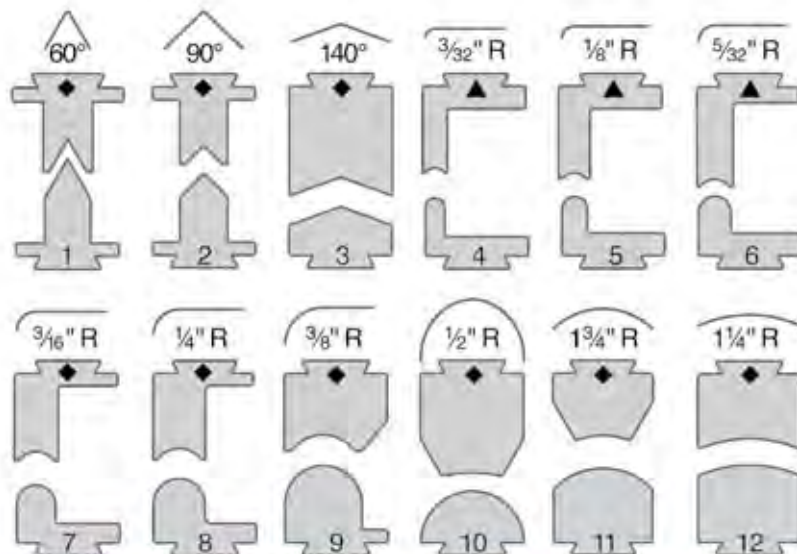


Most Common Accessories in Folding Carton Die Shops Die Sets



STANDARD DIES FOR HELMOLD RULE BENDERS

All standard dies shown are made for 2pt rule.

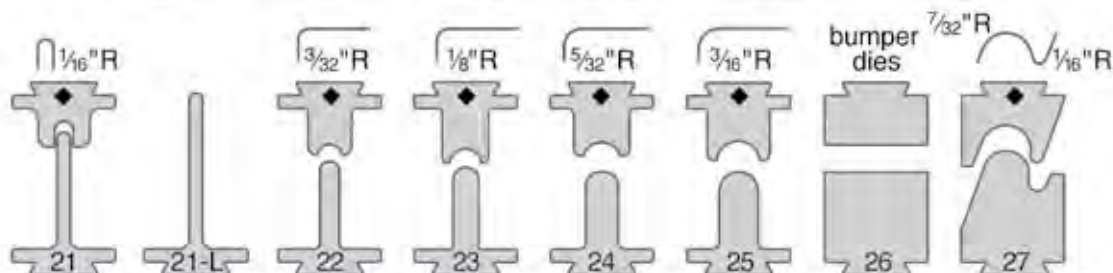
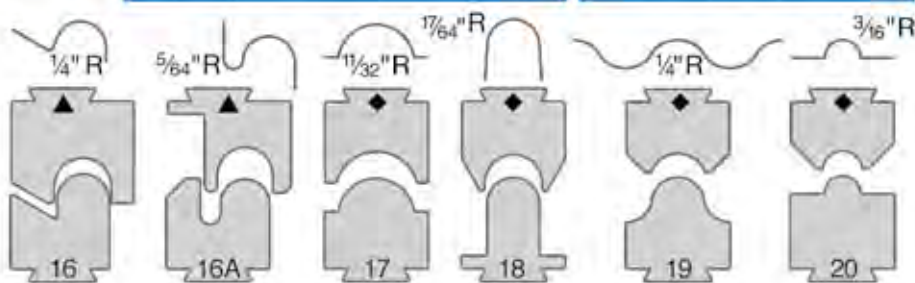
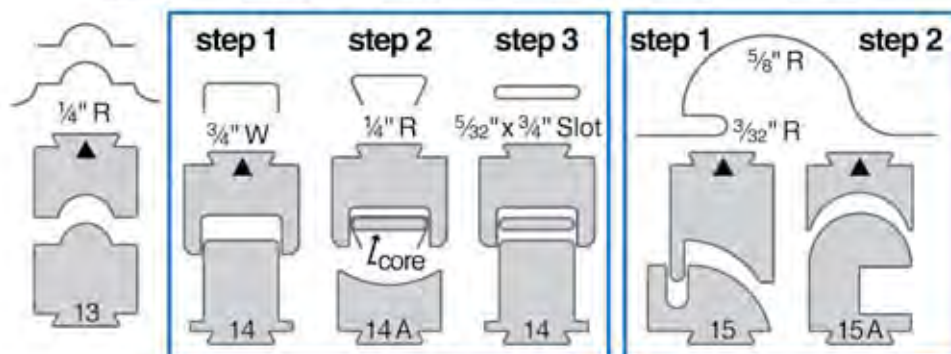


Legend

All standard dies shown in this catalog are for 2 pt. rule. The following symbols indicate those dies which can be opened up for thicker rule. Dies not marked with any symbol cannot be opened up to accommodate thicker rule.

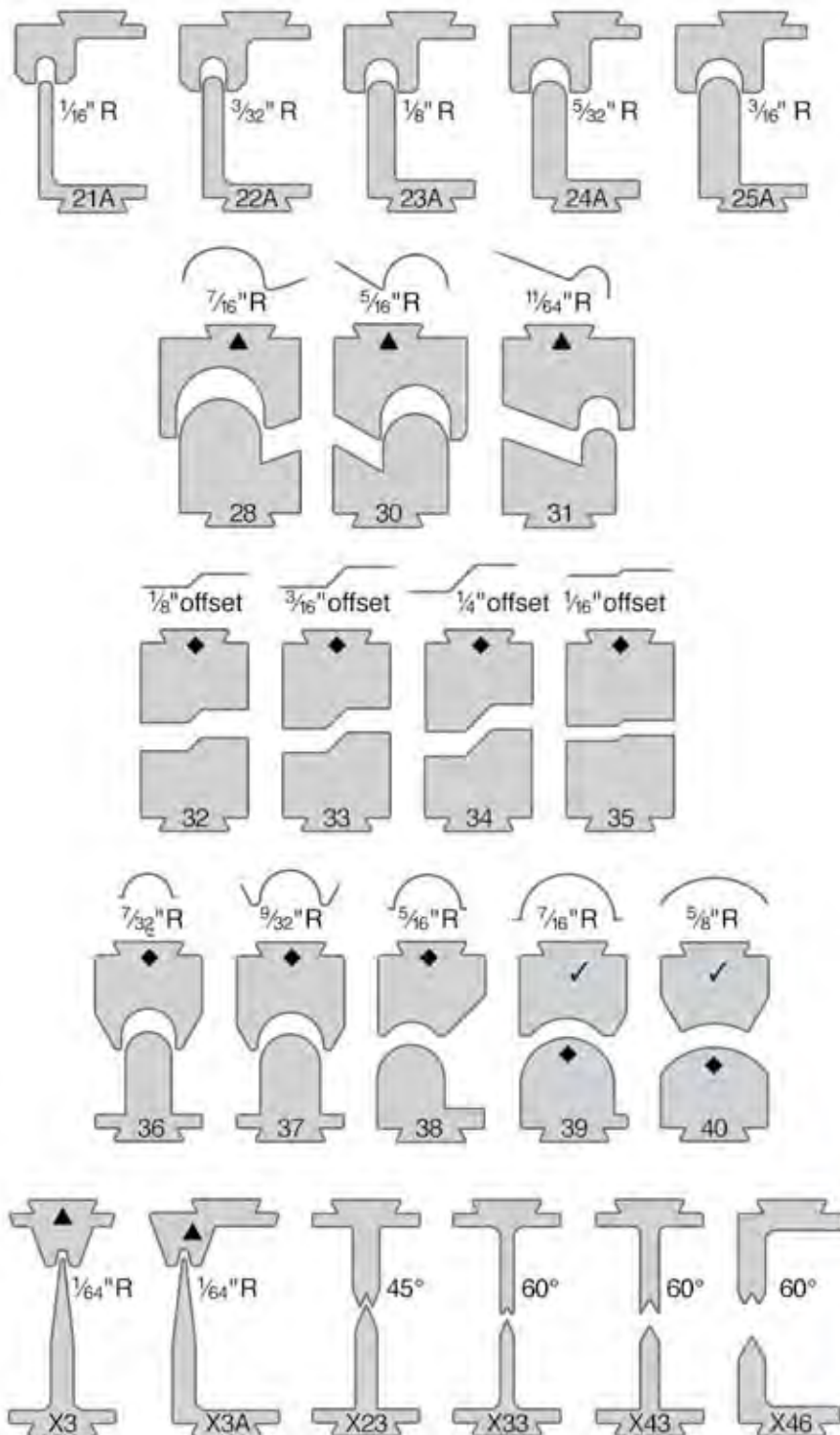
◆ = These dies can be opened up for 3 or 4 pt. rule.

▲ = These dies can be opened up for 3 pt. rule only.



These illustrations are only for approximate shape and are not to true size.

STANDARD DIES FOR HELMOLD RULE BENDERS



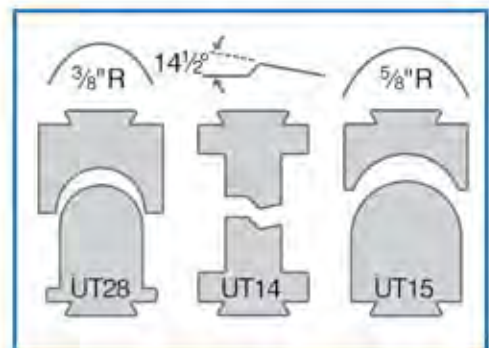
Offsets for Die #35

352 – bends 2pt rule to a 2pt offset

353 – bends 2pt rule to a 3pt offset

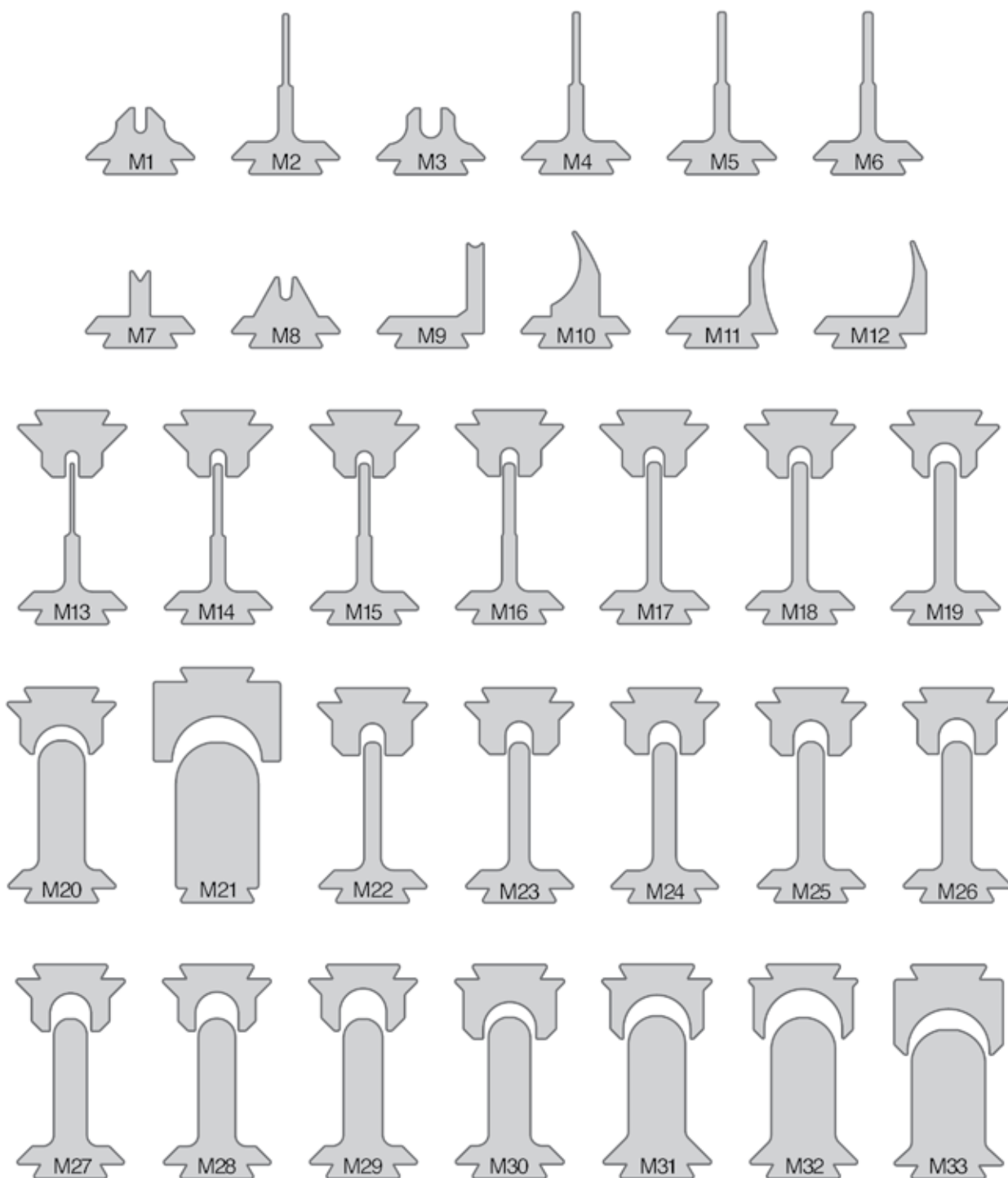
354 – bends 2pt rule to a 4pt offset

356 – bends 2pt rule to a 6pt offse



These illustrations are only for approximate shape and are not to true size.

SPECIAL “M” SERIES DIES FOR HELMOLD RULE BENDERS



MANDREL SETS, SLOT TOOLS, & DIMPLE DIE



Special Mandrel Sets

- For forming long, narrow slots
- For 2pt. rule.
- Fits E-Z Heavy Duty Bender and Bendall. Specify 1", 1-1/4", 1-1/2" & 2" rule height. Requires a dovetail extension and rear support post.
- 365 sets for 3pt., 65 temper rule, bending sets are available in 3/16", 1/4", 5/16" and 3/8" diameters.

Mandrel Diameter (adapter, support, and bushing included)	1/16"	1/8"	3/16"	1/4"	5/16"	3/8"
Female Die Number	X-3B	21B	22B	23B	24B	25B

Complete sets shown above



One Piece Slot Tool

- Fits Heavy Duty Bender and E-Z Heavy Duty Bender for rule 1-1/4", 1-1/2", 2" high.
- For 3 and 4 point rotary rule.
- Order the following sizes as indicated. Specifications for slot tools and mandrels:
Available in 1/8" to 9/16" in 1/16" increments
C = 4pt Center Face
F = 3pt Center Face
R = 4pt Side Face

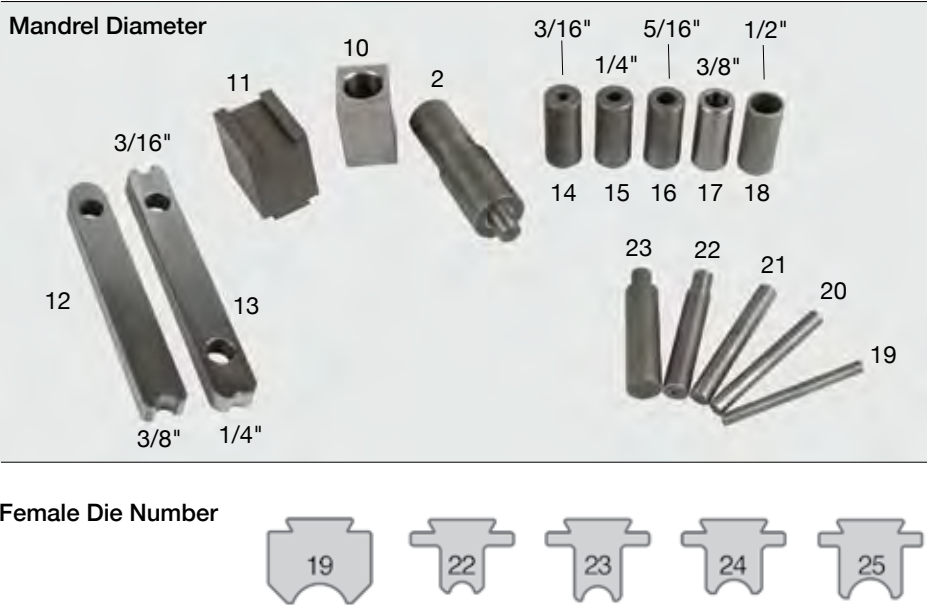


DIMPLE DIES

- Dies fits all Hel mold benders.
- Produces consistent "dimples" in rule, compensating for loose kerf.
- Easily replaceable, long wearing dimple pin.
- Male die is for 2, 3, or 4pt.
- Female: Specify for 2, 3, or 4pt.

MANDREL ACCESSORIES

The accessories on this page are designed to help users perform bends not possible when using standard dies sets.



• Specify your rule height: 1", 1-1/4", 1-1/2", & 2".

Mandrel Set (for use in the following suggested combinations)

Mandrel Diameter	5/8"						9/16"*	7/16"
Sleeve (required and included)	1"	5/16"	7/8"	13/16"	3/4"	1-1/16"	bushing included	bushing included
Female Die Number	10, 37	UT28, 37					37	36

* When used with a rear support post and link are required.



- Mandrel and Sleeve Set**
- When combined with the standard bender accessories shown above, a complete set from 3/16" to 1" by sixteenths is obtained.
 - Fits E-Z Bender Bendall (1" high rule only).
 - Fits E-Z Heavy Duty Bender Specify your rule height: 1", 1-1/4", 1-1/2", & 2". Requires a mandrel adapter, dovetail extension, eccentric back post and links.

CUTTING, MITER, & NOTCHING SERIES



CUTTER SERIES



Model:	1-1/2" Hel mold rule cutter
Maximum pointage	6 point
Maximum height	1-1/2" / 38.1 mm
Machine size	28" x 4" x 7.750"
Shipping Size	31" x 7" x 11"
Net weight	27 lbs.
Shipping weight	42 lbs.



Model:	2-1/8" Hel mold rule cutter
Maximum pointage	6 point
Maximum height	2-1/8" / 53.97mm
Machine size	28" x 4" x 7.750"
Shipping Size	31" x 7" x 11"
Net weight	27 lbs.
Shipping weight	42 lbs.

Model:	2-7/8" Hel mold rule cutter
Maximum pointage	6 point
Maximum height	2-3/4" / 73.02 mm
Machine size	28" x 4" x 7.750"
Shipping Size	31" x 7" x 11"
Net weight	27 lbs.
Shipping weight	42 lbs.

- Equipped with front and rear gauges graduated by sixteenths
- The front gauge cuts up to 6"
- The long back gauge cuts up to 24"

The knives on these tools are removable for sharpening at Hel mold.

MITER SERIES



Model:	Single Miter Machine
Maximum pointage	3 point
Maximum height	.937
Miter bevels	42, 53, or 60 degrees
Machine size	29.5" x 4.125" x 5.25"
Shipping Size	31" x 7" x 11"
Net weight	32 lbs.
Shipping weight	55 lbs.

SHIM REQUIREMENTS

2pt x .937 CF 0.937" height	2pt x .923 CF 0.923" height	2pt x .918 CF 0.918" height	3pt x .937 CF
No shim needed	.014" shim	.019" shim	.007" shim

The width of each female knife must be kept at 0.310". As the female knives are sharpened, shims are required between the sides of the female miter house and the outside vertical edges of the female knives to hold the 0.310" dimensions.



The Hel mold Right and Left Hand Miter Machine

HELMOLD RIGHT AND LEFT HAND MITER MACHINE

Model:	Right and Left Miter Machine
Maximum pointage	3 point
Maximum height	.937
Miter bevels	42, 53, or 60 degrees
Machine size	29.5" x 4.125" x 5.25"
Shipping Size	31" x 7" x 11"
Net weight	32 lbs.
Shipping weight	55 lbs.



Helmold recommends purchasing spare miter knives. This eliminates down time when sending knives to Helmold for sharpening.

NOTCHER SERIES



Model:	Standard Notcher
Maximum thickness	2 point
Standard notch size	1/8" x 5/8", 1/4" x 5/8", 5/16" x 3/4"
Machine size	37.25" x 4.75" x 6"
Shipping Size	44" x 8" x 8"
Net weight	47 lbs.
Shipping weight	70 lbs.

- The standard notcher is made with an adjustable link that allows the male knives to be re-set and adjusted after sharpening
- Can notch even if the rule is bent
- When ordering notcher specify Width x Height

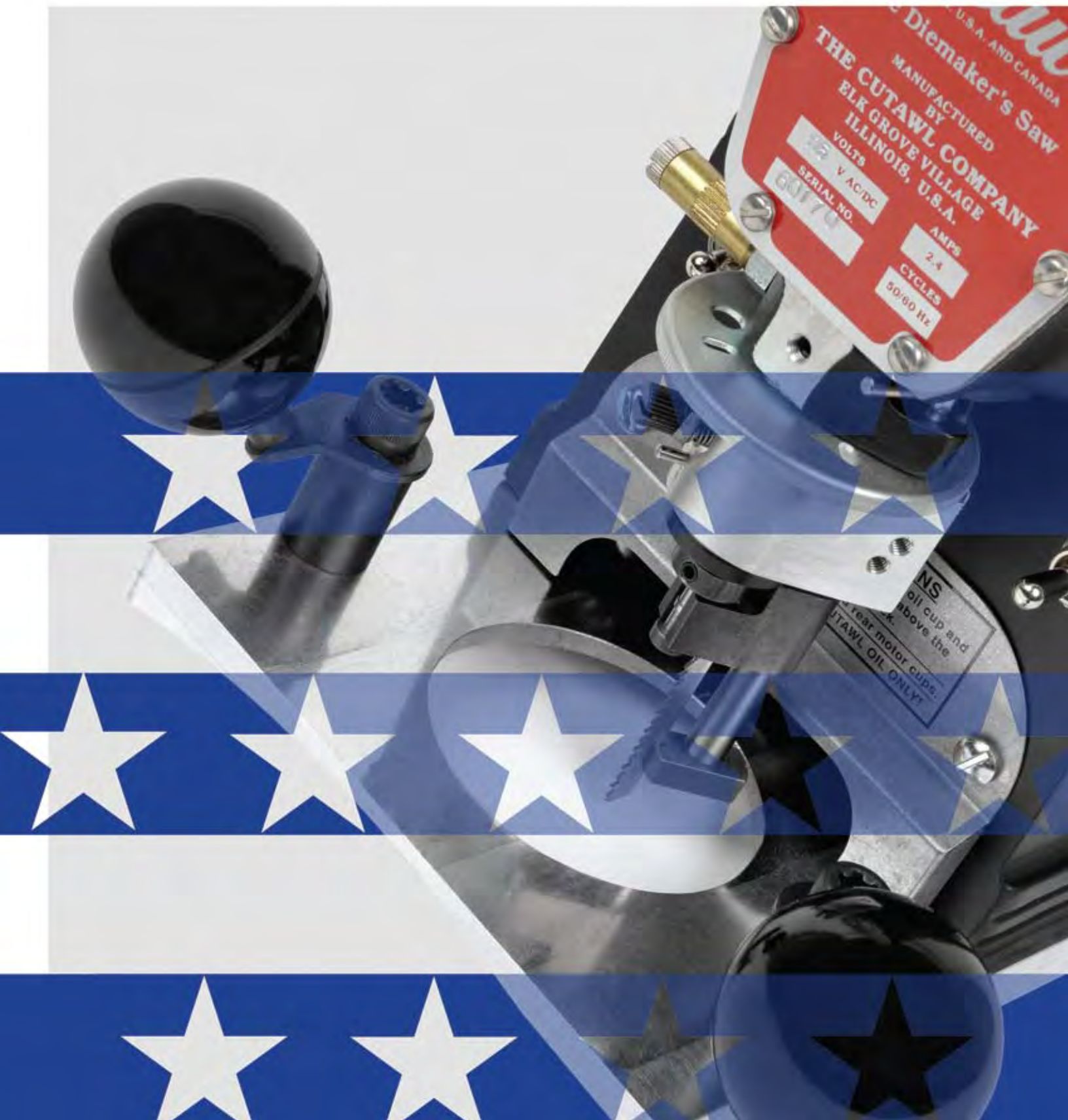


Model:	Heavy Duty EZ Notcher
Maximum thickness	4 point
Standard notch sizes	1/8" x 5/8", 1/4" x 5/8", 5/16" x 3/4", 3/8" x 5/8", 1/2" x 1/2", 3/8" x 3/4", 1/2" x 5/8"
Machine size	37" x 4.750" x 7.750"
Shipping Size	44" x 7.125" x 8.250"
Net weight	49 lbs.
Shipping weight	72 lbs.

- This machine can be modified to accommodate curved rule

The knives on these tools are removable for sharpening at Hel mold.

CUTAWL SAW AND POWER ASSIST SERIES



CUTAWL SAW “THE DIEMAKER’S SAW”



Model:	K-12F Cutawl Saw
Thickness	2, 3, and 4 point
Electric	115V, 50-60 HZ Standard (Optional 220V 50-60 HZ) **
Base	Flat
Machine size	6" x 10.5" x 9.5"
Shipping Size	14" x 10" x 12"
Net weight	16 lbs.
Shipping weight	21 lbs.

Model:	K-12C Cutawl Saw
Thickness	2, 3, and 4 point
Electric	115V, 50-60 HZ Standard (Optional 220V 50-60 HZ) **
Base	Curved (Specify 66" or 50")
Machine size	6" x 10.5" x 10"
Shipping Size	14" x 10" x 12"
Net weight	16 lbs.
Shipping weight	21 lbs.

Current Cutawl Blades:

The high-speed, portable, precision saw specifically designed for making rotary and flat cutting dies. It cuts hard maple and birch dieboards quickly and easily. Straight lines, curves, or intricate patterns are simple to cut with the free floating 360 degree swivel head. The curved base plate for making rotary dies is of high quality, one-piece cast aluminum. The flat base is made of stainless steel.

** An optional Radio Frequency Interference Suppressor is available.

Cutawl Blades	Pointage	Tooth Hight	Material Thickness	TPI
32	2	0.120	0.025	8
33	3	0.120	0.035	8
34	4	0.120	0.035	8
42	2	0.175	0.025	10
43	3	0.175	0.035	10
44	4	0.175	0.035	10
44HD	4	0.175	0.042	10
44HDL	4	0.175	0.042	10

POWER-ASSISTED NOTCHER AND BENDER



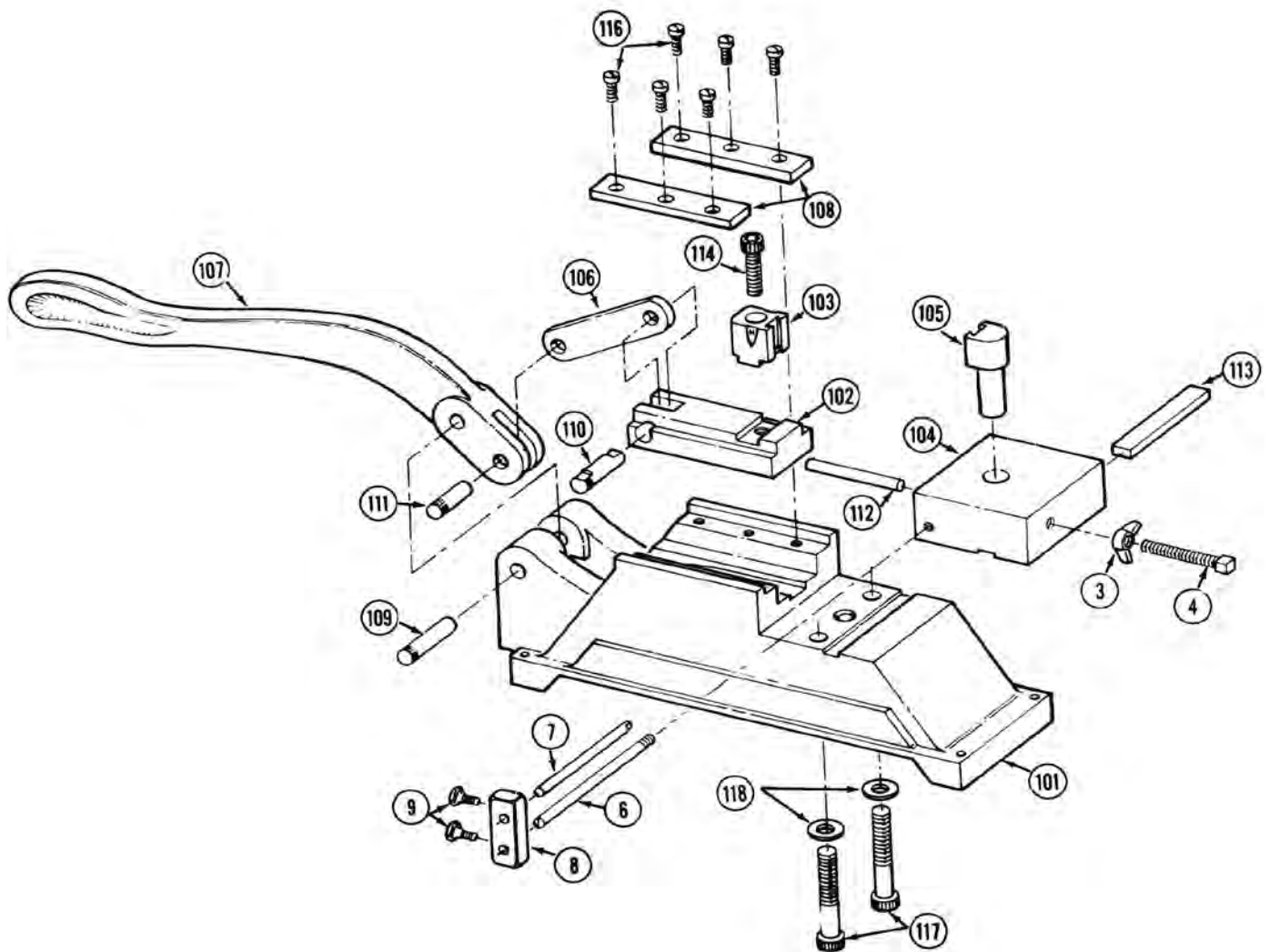
Model:	Power-Assisted Notcher
Maximum thickness	6 point
Standard notch sizes	1/8" x 5/8", 1/4" x 5/8", 5/16" x 3/4", 3/8" x 5/8", 1/2" x 1/2", 3/8" x 3/4", 1/2" x 5/8"
Machine size	41" x 6.5" x 15"
Shipping Size	46" x 25" x 19"
Net weight	98 lbs.
Shipping weight	150 lbs.

The knives on these tools are removable for sharpening at Hel mold.



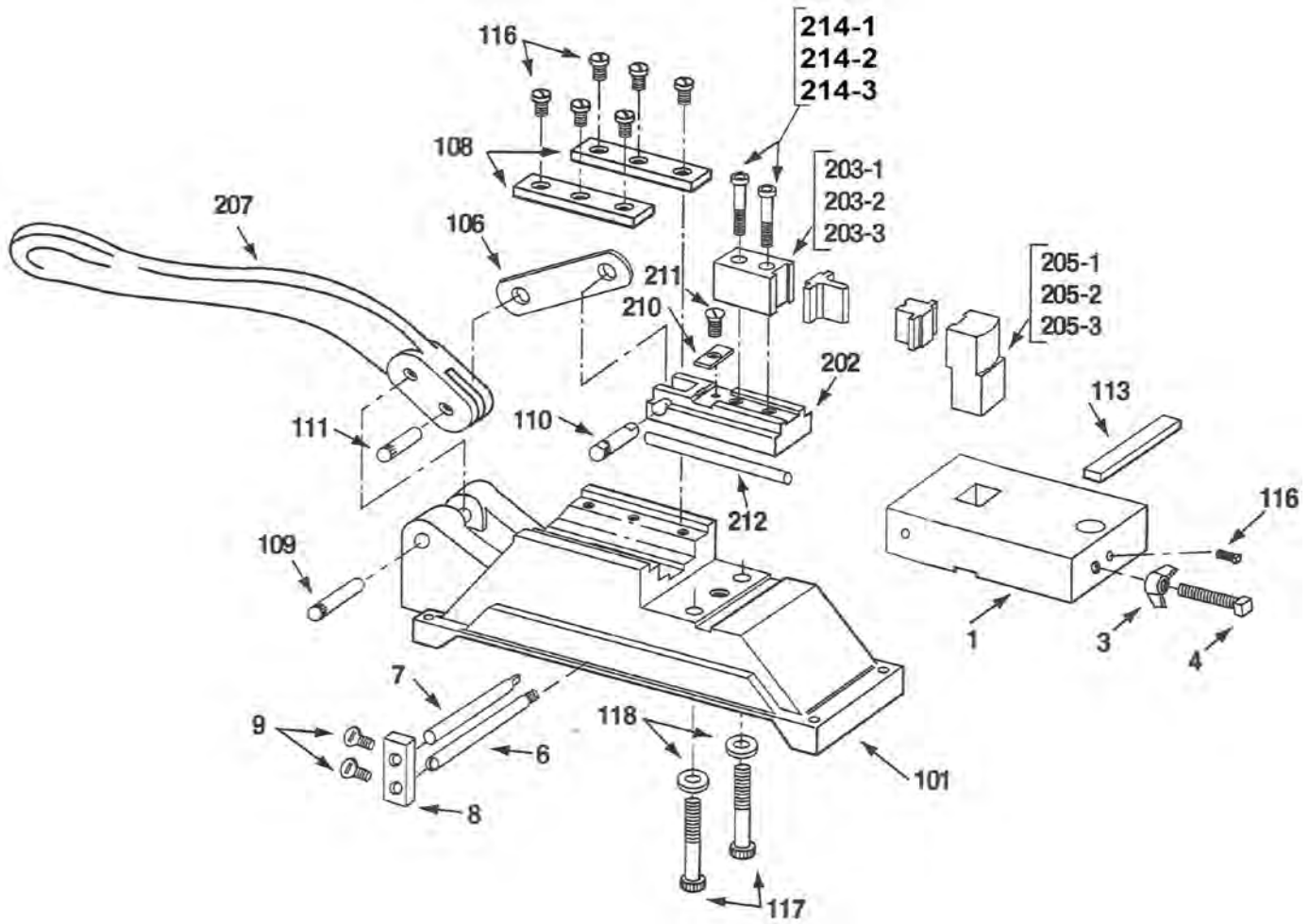
Model:	Power-Assisted Bender
Maximum thickness	6 point
Maximum Height	2" / 50.8 mm
Machine size	41" x 6.5" x 15"
Shipping Size	46" x 25" x 19"
Net weight	98 lbs.
Shipping weight	150 lbs.

STANDARD BENDER



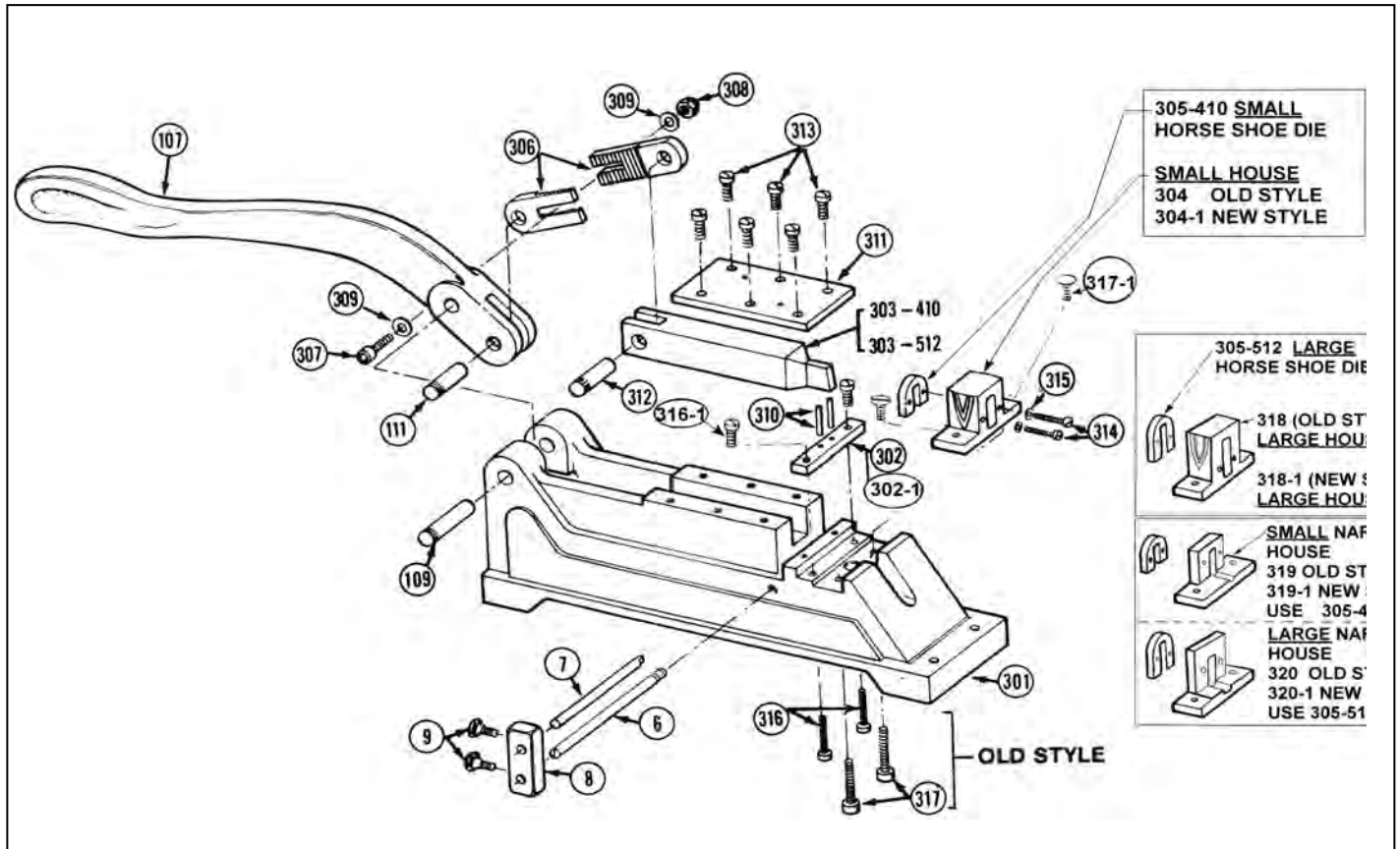
CAT #	SAP #	QT/MACH	DESCRIPTION	NOTES
3	60005455	1	3/8 - 16 WING NUT	60005455 (3/8 - 16 Zink Plated Plain Steel Wing Nut)
4	60000243	1	3/8-16 x 2.75" SET SCREW	60000243 (SQ HD SET SCREW 3/8-16 x 2.75)
6	60000245	1	BASE ROD	
7	60000246	1	GAUGE ROD	
8	60000247	1	ROD HOLDER	
9	60005255	2	1/4 - 20 THUMB SCREW	60005255 (Spade-Head Thumb Screws 1/4-20 x 1/2)
101	60000258	1	BODY	
102	60000259	1	SLIDING BLOCK BENDER STD	
103	60000954	1	FRONT DOVETAIL POST 1"	
104	60000260	1	BACK BLOCK STD BENDER	
105	60000955	1	BACK DOVETAIL POST for STANDARD BENDER	
106	60000956	1	SOLID LINK	
107	60000261	1	STANDARD HANDLE	
108	60000957	2	HOLD DOWN PLATES	
109	60000262	1	ROUND KNURLED PIN	
110	60000958	1	FLAT KNURLED PIN	
111	60000263	1	EQ P B/N/C/M SHORT PIN	
112	60000264	1	STOP PIN- STANDARD BENDER	
113	60000265	1	KEY	
114	60000954	1	BENDER FRONT D/T POST ALLEN BOLT	60000266 (Socket HD Cap Scr 7/16-20 X 1.5)
116	60005302	6	FILLISTER HEAD SCREW 1/4-20 X 1/2	60005302 (Fillister Head machine screw 1/4-20 x 1/2)
117	60000267	2	BODY TO BACK BLOCK BOLT	60000267 (Socket HD Cap Screw 7/16-14 X 2.75)
118	60000268	2	ALLEN BOLT WASHER	60000268 (7/16 Common Washers)

HEAVY DUTY BENDER



CAT #	SAP #	QT/MACH	DESCRIPTION	NOTES
1	60000951	1	BACK BLOCK ASSEMBLY	Combines 1-1,1-2,and 1-3 into one part 60005455 (3/8 - 16 Zink Plated Plain Steel Wing Nut) 60000243 9 (3/8-16 x 2.75 Sq. Hd. set screw)
3	60005455	1	EQ P BENDER WING NUT	
4	50000243	1	SET SCREW	
6	60000245	1	BASE ROD	
7	60000246	1	GAUGE ROD	60005255 (Spade-Head Thumb Screws 1/4-20 x 1/2)
8	60000247	1	ROD HOLDER	
9	60005255	2	1/4 - 20 THUMB SCREW	
101	60000258	1	BODY	
106	60000956	1	SOLID LINK	
108	60000957	2	HOLD DOWN PLATES	
109	60000262	1	ROUND KNURLED PIN	
110	60000958	1	FLAT KNURLED PIN	
111	60000263	1	EQ P B/N/C/M SHORT PIN	60005302 (Fillister Head machine screw 1/4-20 x 1/2) 60000267 (Socket HD Cap screw 7/16-14 X 2 3/4) 60000268 (7/16 Common Washers)
113	60000265	1	KEY	
116	60005302	7	FILLISTER HEAD SCREW 1/4-20 x 1/2	
117	60000267	2	BODY TO BACK BLOCK BOLT	
118	60000268	2	ALLEN BOLT WASHER	60000274 (10-32 x 1/2 Flat hd screw)
202	60000270	1	SLIDING BLOCK - HEAVY DUTY BENDER	
207	60000961	1	HEAVY DUTY HANDLE	
210	60000962	1	MALE BACK UP BLOCK	
211	60000274	1	HOLD DOWN SCREW	
212	60000979	1	STOP PIN	
203-1	60000989	1	FRONT DOVETAIL POST 1.250	
203-2	60000271	1	FRONT DOVETAIL DIEHOLDER 1.500	
203-3	60000272	1	FRONT DOVETAIL DIEHOLDER 2.000	
205-1	60001078	1	BACK REMOVABLE DIEHOLDER 1.250	
205-2	60001117	1	BACK REMOVABLE DIEHOLDER 1.500	
205-3	60000273	1	BACK REMOVABLE DIEHOLDER 2.000	
214-1	60000276	2	FRONT DOVETAIL POST ALLEN BOLT 1.250	
214-2	60000277	2	FRONT DOVETAIL POST ALLEN BOLT 1.500	
214-3	60000278	2	FRONT DOVETAIL POST ALLEN BOLT 2.000	

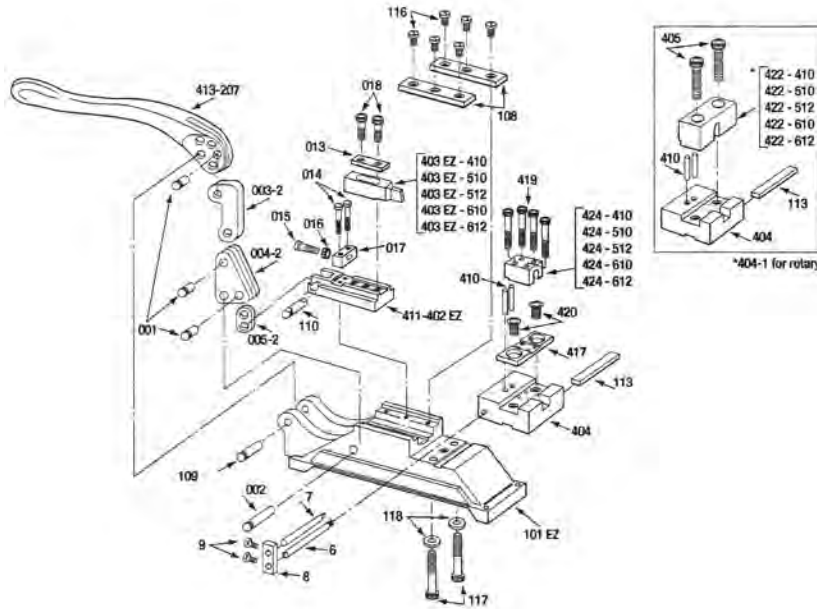
STANDARD HELMOLD NOTCHER



CAT #	SAP #	QT/MACH	DESCRIPTION	NOTES
6	60000245	1	BASE ROD	
7	60000246	1	GAUGE ROD	
8	60000247	1	ROD HOLDER	
9	60005255	2	1/4 - 20 THUMB SCREW	60005255 (Spade-Head Thumb Screws 1/4-20 x 1/2)
107	60000261	1	STANDARD HANDLE	
109	60000262	1	ROUND KNURLED PIN	
111	60000263	1	SHORT PIN	
301	60000284	1	BODY FOR STD. NOTCHER & MITER	
302	60001079	1	WEAR PLATE - OLD STYLE	
304	60001120	1	OLD STYLE FEMALE HOUSE 1/4 X 5/8	
306	-	X	SOLD AS A LINK ASSEMBLY	60000288
307	-	X	SOLD AS A LINK ASSEMBLY	60000289 (1/4-20 x 3/4 socket hd cap screw)
308	-	X	SOLD AS A LINK ASSEMBLY	60000290 (1/4-20 NYLON-INSERT LOCKNUT)
309	-	X	SOLD AS A LINK ASSEMBLY	60000291 (1/4 plain washer,zink plated)
310	60005493	2	STRIPPER PIN	
311	60000292	1	COVER PLATE	
312	60000293	1	STANDARD MALE KNURLED PIN	
313	60000294	6	Cover Plate Allen Bolts 10-32 x .50	60000294 (10-32 x 1/2 Socket Hd Cap Screw)
314	60005299	2	House to Female Knife Screws	60005299 (6-32 x 1 1/8 Fillister Hd cap screw)
315	60000295	2	House Washers	60000295 (#6 split lock washer)
316	60000296	2	BODY TO WEAR PLATE SCREWS	
317	60005495	2	BODY TO HOUSE SCREWS	60000297 5/16"-18 X 7/8" SOC HD CAP SCREW
318	60000298	1	OLD FEMALE HOUSE 5/16 X 3/4	
319	xxxxxx		Small Narrow House - old style	
320	60001119		Large Narrow House - old style	
302-1	60000285	1	WEAR PLATE- NEW STYLE	
304-1	60000286	1	NEW FEMALE HOUSE 1/4 X 5/8	
317-1	60005495		BODY TO HOUSE SCREWS	60002166 (5/16 dia x 3/4" Button hex hd cap scr.)
318-1	60000299	1	NEW FEMALE HOUSE 5/16 X 3/4	
319-1	60001118		Small Narrow House - new style	
320-1	60000287		Large Narrow House - new style	
406 SET	60002548	1	ADJ LINK ASSMBLY	MADE UP OF 306, 307, 308, 309
316-1	60005494	2	Socket Flat hd screw	10-32- x 1/2"
303-410	60000315	1	MALE KNIFE 1/4 X 5/8	
303-512	60001383	1	MALE KNIFE 5/16 X 3/4	
305-410	60000307	1	FEMALE KNIFE 1/4 X 5/8	Outside Width of die .760"
305-512	60001403	1	FEMALE KNIFE 5/16 X 3/4	Outside Width of die .885"

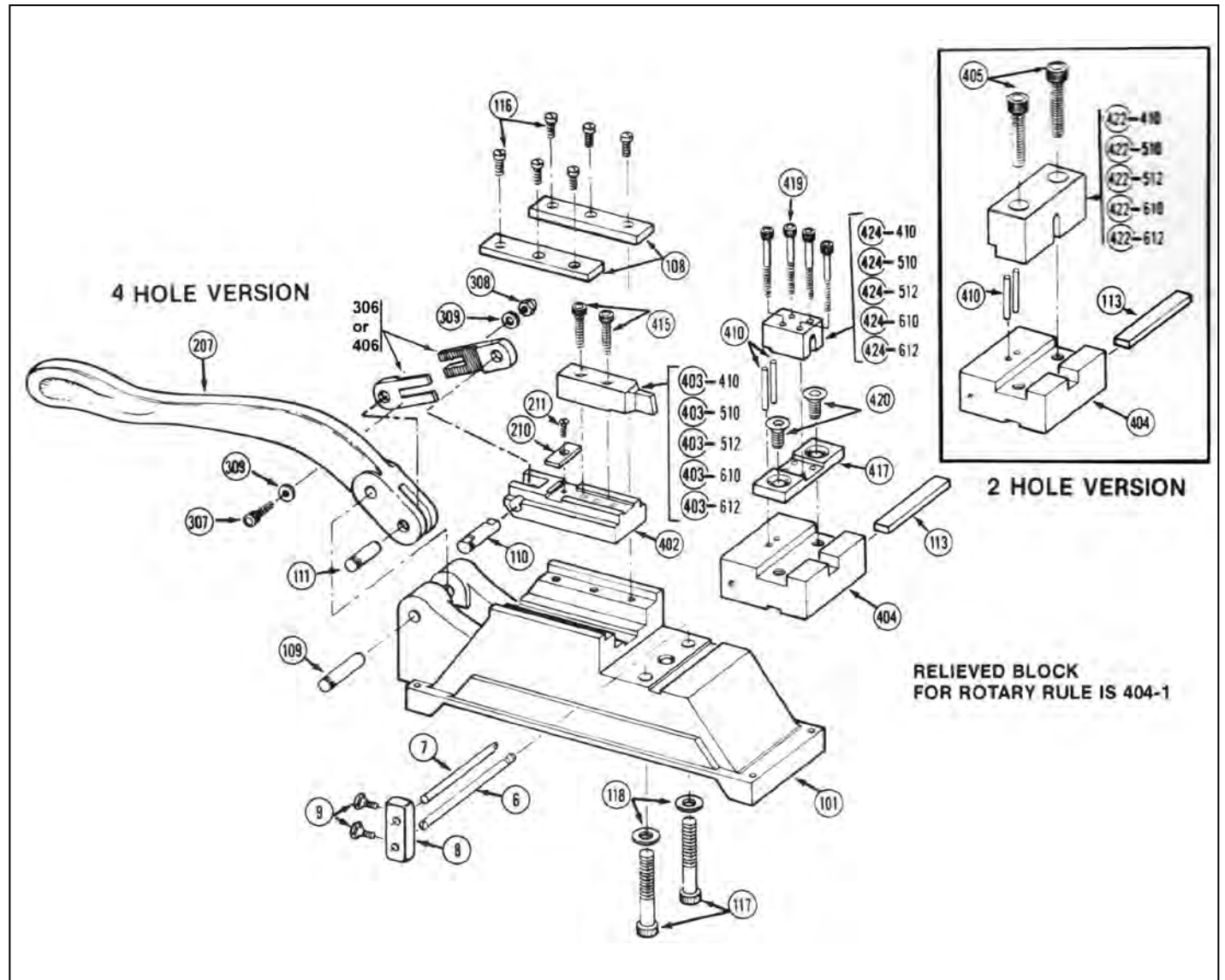
- OLD STYLE machine have house and wear plate mounting screws inserted from the bottom of the machine
- NEW STYLE machines have house and wear plate mounting screws inserted from the top of the machine.
- Notch die that are 1/4" and wider OR 5/8" and higher require large size house and die

EZ NOTCHER



CAT #	SAP #	QT/MACH	DESCRIPTION	NOTES
1	60000263	3	Knurled Pin	
2	60000976	1	Knurled Pin	
6	60000245	1	BASE ROD	
7	60000246	1	GAUGE ROD	
8	60000247	1	ROD HOLDER	
9	60005255	2	1/4 - 20 THUMB SCREW	60005255 (Spade-Head Thumb Screws 1/4-20 x 1/2)
013	60000972	1	Washer Plate	
014	-	2	Socket HD Cap Screw(Hold Down)	60005460 (1/4 - 20 x 1.25" Socket HD Cap Screw)
015	-	1	Socket Hd Cap Scr. (Adj Scr Male Knife)	60005461 (3/8-16 x 1.5 Socket Hd Cap Scr.)
016	60005462	1	Nut	60005462 (3/8 - 16 Grade 5 Nut-Black Oxide finish)
017	60000973	1	EZ NOTCH ADJUSTABLE MALE BACK UP BLOCK	
018	60000022	2	Socket HD Cap Scr.	60005389 (5/16 -18 x 2" Socket HD Cap Scr)
108	60000957	2	Hold Down Plates	
109	60000262	1	Knurled Pin	109-EZ / 60000988, Replaced by 109
110	60000958	1	Knurled Pin (Flat)	110-EZ / 60000987, Replaced by 110
113	60000625	1	Key	
116	60005302	7	FILLISTER HEAD SCREW 1/4-20 X 1/2"	60005302 (Fillister Head machine screw 1/4-20 x1/2)
117	60000267	2	7/16-14 x 2 3/4" Body to Back Block Allen Bolt	60000267 (Socket HD Cap screw 7/16-14 X 2.75)
118	-	2	7/16 Plain Washer	60000268 (7/16 Common Washers)
405	60000297	2	Female Allen Bolts	60005298 (1/2 - 13 x 2" Socket HD Cap Screw)
410	60000965	2	Stripper Pins	
417	60000966	1	4-Hole Female Die Holder Block	
419	-	4	5/16 - 24 x 2.25 Socket HD Cap Scr. 4-Hole	60000327 (5/16-24 x 2 1/4 Socket Hd Cap Screw)
420	-	2	4-Hole Die Holder	60005390 (1/2 - 13 x 1" Flat HD Cap Screw)
003-2	60000860	1	Link No. 1 Notcher Version	
004-2	60000862	1	Link No. 2 Notcher Version	
005-2	60000864	1	Link No. 3 Notcher Version	
101-EZ	60000985	1	EZ BODY	
411-402 EZ	60001037	1	EZ SLIDING BLOCK NOTCHER	
413-207	60000869	1	HEAVY DUTY HANDLE FOR EZ	
403-410-EZ	60000371		HD Male Knife 1/4" x 5/8"	
403-510-EZ	60000372		HD Male Knife 5/16" x 5/8"	
403-512-EZ	60000373		HD Male Knife 5/16" x 3/4"	
403-610-EZ	60000374		HD Male Knife 3/8" x 5/8"	
403-612-EZ	60000375		HD Male Knife 3/8" x 3/4"	
403-808	60000998		HD Male Knife 1/2" x 1/2"	
403-810	60000376		HD Male Knife 1/2" x 5/8"	
404	60001914		Back Block - STD (Flat Rule) Notch width 1/2" and over	
404	60000964		Back Block - STD (Flat Rule) Notch width 1/8" to 3/8"	
404-1	60002591		Rotary Back Block Notch width 1/2" and over"	
404-1	60000390		Rotary Back Block Notch width 1/8" to 3/8"	
422-410	60000347		2-Hole Female Knife 1/4" x 5/8"	
422-510	60000348		2-Hole Female Knife 5/16" x 5/8"	
422-512	60000349		2-Hole Female Knife 5/16" x 3/4"	
422-610	60000350		2-Hole Female Knife 3/8" x 5/8"	
422-612	60000999		2-Hole Female Knife 3/8" x 3/4"	
403-808	60000364		2-Hole Female Knife 1/2" x 1/2"	
403-810	60000351		2-Hole Female Knife 1/2" x 5/8"	
424-410	60000352		4-Hole Female Knife 1/4" x 3/8"	
424-510	60000353		4-Hole Female Knife 5/16" x 5/8"	
424-512	60000354		4-Hole Female Knife 5/16" x 3/4"	
424-610	60000355		4-Hole Female Knife 3/8" x 5/8"	
424-612	60000356		4-Hole Female Knife 3/8" x 3/4"	

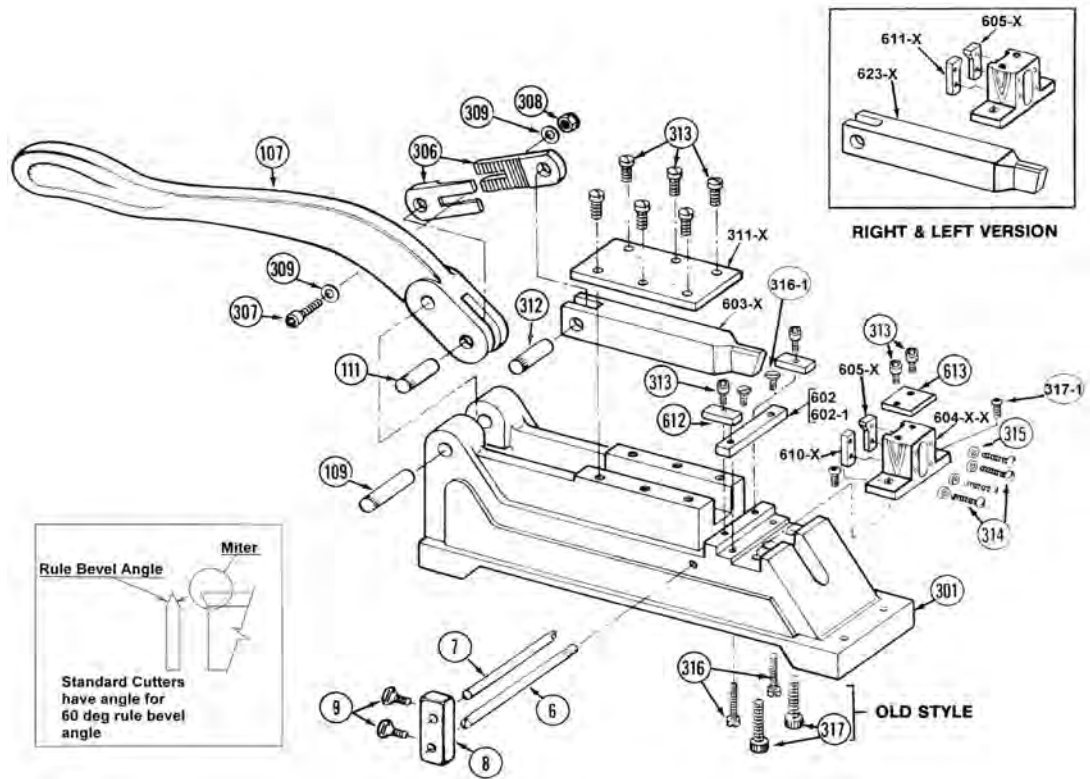
HEAVY DUTY NOTCHER



HEAVY DUTY NOTCHER

CAT #	SAP #	QT/MACH	DESCRIPTION	NOTES
6	60000245	1	BASE ROD	
7	60000246	1	GAUGE ROD	
8	60000247	1	ROD HOLDER	
9	60005255	2	1/4 - 20 THUMB SCREW	
	60005255		(Spade-Head Thumb Screws 1/4-20 x 1/2)	
101	60000258	1	BODY	
108	60000957	2	HOLD DOWN PLATES	
109	60000262	1	ROUND KNURLED PIN	
110	60000958	1	FLAT KNURLED PIN	
111	60000263	1	SHORT PIN	
113	60000265	1	KEY	
116	60005302	6	FILLISTER HEAD SCREW 1/4-20 X 1/2	60005302 (Fillister Head machine screw 1/4-20 x 1/2)
117	60000267	2	BODY TO BACK BLOCK BOLT	60000267 (Socket HD Cap screw 7/16-14 X 2.75)
118	60000268	2	ALLEN BOLT WASHER	60000268 (7/16 Common Washers)
207	60000961	1	HEAVY DUTY HANDLE	
210	60000962	1	MALE BACK UP BLOCK	
211	60000274	1	HOLD DOWN SCREW	60000274 (10-32 x .50 Flat hd screw)
306	-	X	SOLD AS A LINK ASSEMBLY	60000288 LINK
307	-	X	SOLD AS A LINK ASSEMBLY	60000289 (1/4-20 x 3/4 socket hd cap screw)
308	-	X	SOLD AS A LINK ASSEMBLY	60000290 (1/4-20 NYLON-INSERT LOCKNUT)
309	-	X	SOLD AS A LINK ASSEMBLY	60000291 (1/4 plain washer,zink plated)
402	60000963	1	HEAVY DUTY NOTCHER SLIDING BLOCK	
405	-		Female Allen Bolts	60005298 (1/2 - 13 x 2" Socket HD Cap Screw)
406	-	X	SOLD AS A LINK ASSEMBLY	60000325 LINK
410	60000965	2	STRIPPER PIN 1/4	
415	60000326	2	ALLEN BOLT FOR MALE NOTCH KNIFE	60000326 (5/16-24 x 1 1/4 Socket Hd Cap screw)
417	60000966	1	4-HOLE FEMALE KNIFE HOLDER BLOCK	4 hole machine only
419	-	4	4-HOLE FEMALE ALLEN BOLT	60000327 (5/16-24 x 2 1/4 Socket Hd Cap screw)
420	60005390	2	EQ P NOTCHER EZ/HD 4-HOLE DH ALLEN BOLT	4 hole machine only
Link ass'sy	60002548		ADJ LINK ASSMBLY notchers 1/2 and wider	2.3" link
	60002549		ADJ LINK ASSMBLY notchers less than 1/2 wide	2.6" link
403-410	60000371		HD Male Knife 1/4" x 5/8"	
403-510	60000372		HD Male Knife 5/16" x 5/8"	
	60000387		HD Male Knife 5/16" x 11/16"	
403-512	60000373		HD Male Knife 5/16" x 3/4"	
403-610	60000374		HD Male Knife 3/8" x 5/8"	
403-612	60000375		HD Male Knife 3/8" x 3/4"	
403-808	60000998		HD Male Knife 1/2" x 1/2"	
403-810	60000376		HD Male Knife 1/2" x 5/8"	
404	60001914		Back Block - STD (Flat Rule) Notch width 1/2" and over	
	60000964		Back Block - STD (Flat Rule) Notch width 1/8" to 3/8"	
404-1	60002591		Rotary Back Block Notch width 1/2" and over	
	60000390		Rotary Back Block Notch width 1/8" to 3/8"	
	60005318		35" DIA ROTARY - 1/2" +WIDE"	
422-410	60000347		2-Hole Female Knife 1/4" x 5/8"	
422-510	60000348		2-Hole Female Knife 5/16" x 5/8"	
422-512	60000349		2-Hole Female Knife 5/16" x 3/4"	
422-610	60000350		2-Hole Female Knife 3/8" x 5/8"	
422-612	60000999		2-Hole Female Knife 3/8" x 3/4"	
403-808	60000364		2-Hole Female Knife 1/2" x 1/2"	
403-810	60000351		2-Hole Female Knife 1/2" x 5/8"	
424-410	60000352		4-Hole Female Knife 1/4" x 3/8"	
424-510	60000353		4-Hole Female Knife 5/16" x 5/8"	
424-512	60000354		4-Hole Female Knife 5/16" x 3/4"	
424-610	60000355		4-Hole Female Knife 3/8" x 5/8"	
424-612	60000356		4-Hole Female Knife 3/8"x 3/4"	

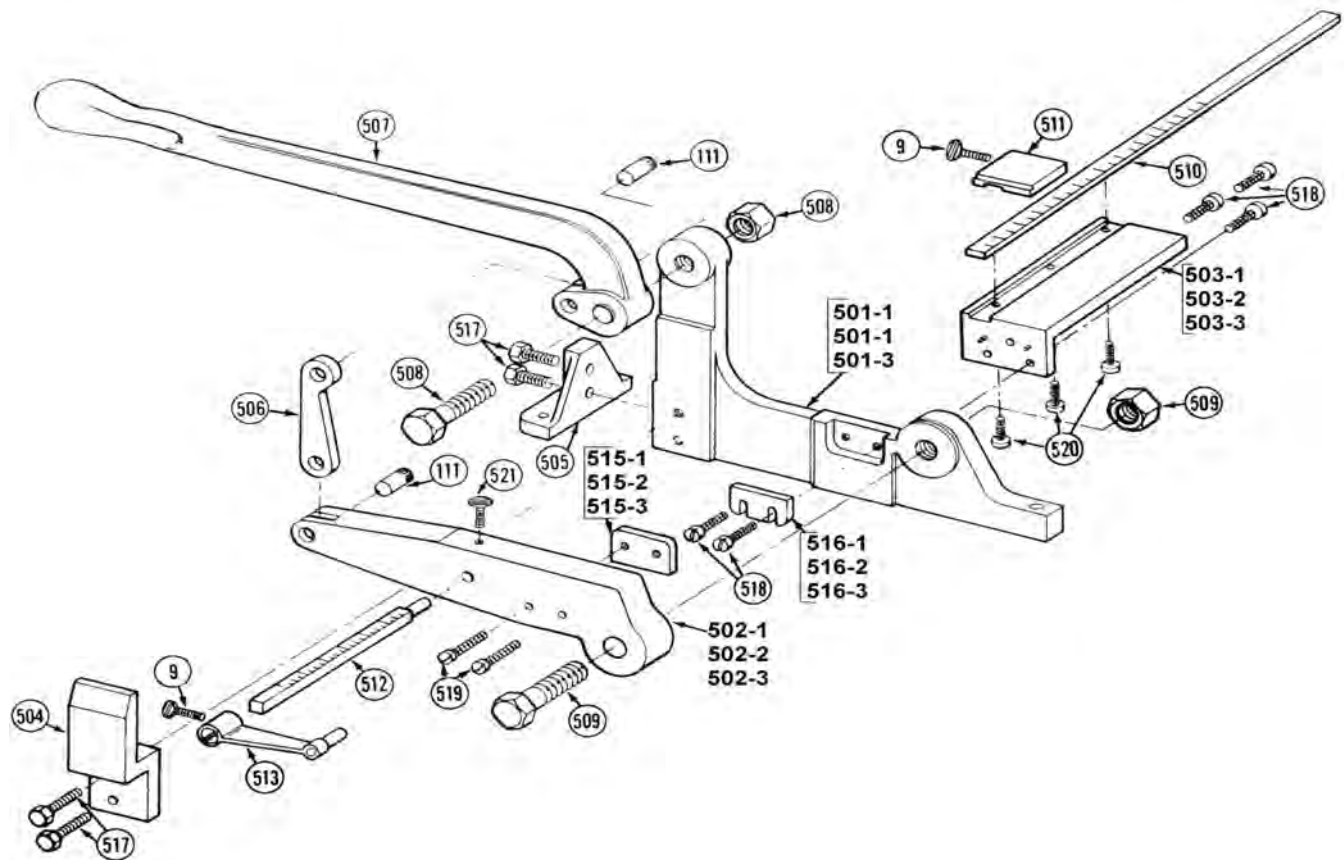
STANDARD MITER MACHINE



CAT #	SAP #	QT/MACH	DESCRIPTION	NOTES
6	60000245	1	BASE ROD	
7	60000246	1	GAUGE ROD	
8	60000247	1	ROD HOLDER	
9	60005255	2	1/4 - 20 THUMB SCREW	60005255 (Spade-Head Thumb Screws 1/4-20 x 1/2)
107	60000261	1	STANDARD HANDLE	
109	60000262	1	ROUND KNURLED PIN	
111	60000263	1	EQ P B/N/C/M SHORT PIN	
301	60000284	1	BODY FOR STD. NOTCHER & MITER	
306	-	X	SOLD AS A LINK ASSEMBLY	60000288
307	-	X	SOLD AS A LINK ASSEMBLY	60000289 (1/4-20 x 3/4 socket hd cap screw)
308	-	X	SOLD AS A LINK ASSEMBLY	60000290 (1/4-20 NYLON-INSERT LOCKNUT)
309	-	X	SOLD AS A LINK ASSEMBLY	60000291 (1/4 plain washer,zink plated)
311	60000292	1	COVER PLATE	
311-1	60002181	1	COVER PLATE Relieved	
312	60000293	1	STANDARD MALE KNURLED PIN	For rule over 1" high
313	-	8	Cover Plate & Wear plate hold down Allen Bolts	60000294 (10-32 x .50 Socked hd cap screw)
314	60005299	4	House to Female Knife Screws	60005299
315	60000295	4	House Washers	60000295 (#6 Plain Steel Washer)
316	60000296	2	BODY TO WEAR PLATE SCREWS	60000296 (10-32 x .5" FLAT HD SOCKET SCR)
317	60005495	2	BODY TO HOUSE SCREWS	60000297
317-1	-	-	BODY TO HOUSE SCREWS	60002166
602	60000969	1	Wear Plate -Old Style	
602-1	60001125	1	WEAR PLATE -New Style	
612	60001087	2	SHIM HOLD DOWN BLOCK	
613	60000430		Female House Cover Plate	
-----	see note		SHIMS	
406 SET	60002548	1	ADJ LINK ASSMBLY HD NOTCH MACHINE	NOT SHOWN Consult dwg. D 6000012 MADE UP OF 306, 307, 308, 309
604-_-1	60001086		MITER HOUSE -Old Style .918,.937 & 1" HIGH	
604-_-4	60002345		MITER HOUSE -Old Style 1 1/8" HIGH	
604-_-5			MITER HOUSE -Old Style 1 1/4" HIGH	
604-_-6			MITER HOUSE -Old Style 1 1/2" HIGH	
604-1-1	60001021		MITER HOUSE -New Style .918,.937 & 1" HIGH	
604-1-4	60000426		MITER HOUSE -New Style 1 1/8" HIGH	
604-1-5	60002180		MITER HOUSE -New Style 1 1/4" HIGH	
604-1-6			MITER HOUSE -New Style 1 1/2" HIGH	
610-1	60000971		KNIFE SUPPORT for rule heights up to 1" high	Used where left side miter knife is not supplied
610-4	60001024		KNIFE SUPPORT for 1 1/8" high rule	
610-5	60001303		KNIFE SUPPORT for 1 1/4" high rule	
610-6			KNIFE SUPPORT for 1 1/2" high rule	

- OLD STYLE machine have house and wear plate mounting screws inserted from the bottom of the machine
- NEW STYLE machines have house and wear plate mounting screws inserted from the top of the machine.

HELMOLD RULE CUTTER (horizontal)



CAT #	SAP #	QT/MACH	DESCRIPTION	NOTES
9	-	2	1/4 - 20 THUMB SCREW	60005255 (Spade-Head Thumb Screws 1/4-20 x 1/2)
111	60000263	2	EQ P B/N/C/M SHORT PIN	
504	60000401	1	EQ P CUTTER BRACKET	
505	60000402	1	EQ P CUTTER LEG MOUNT	
506	60000403	1	EQ P CUTTER LINK	
507	60000404	1	EQ P CUTTER HANDLE	
508	60000405	1	EQ P CUTTER HANDLE BOLT 5/8"	60000405 - Pt# 508 sold as a nut and bolt set
508	60005346	1	EQ P CUTTER HANDLE NUT 5/8"	60005346 - Pt# 508 sold as a nut and bolt set
509	60000406	1	EQ P CUTTER KNIFE BAR BOLT 3/4	60000406 - Pt# 509 sold as a nut and bolt set
509	60005347	1	EQ P CUTTER KNIFE BAR NUT 3/4	60005347 - Pt# 509 sold as a nut and bolt set
510	60000967	1	EQ P CUTTER LONG GAUGE BAR	Marked in English units-Consult Engineering for metric gauge
511	60000968	1	EQ P CUTTER LONG GAUGE STOP	
512	60000407	1	EQ P CUTTER SHORT GAUGE BAR	Marked in English units-Consult Engineering for metric gauge
513	60000408	1	EQ P CUTTER SHORT GAUGE STOP	
517	60000413	4	EQ P CUTTER BOLT 3/8 X 1	60000413 (3/6-16 x 1 Grade 2 Hex Hd Bolt)
518	60000414	5	EQ P CUTTER SCREW 1/4 X 3/4	60000414 (1/4-20 x 3/4 Button Hd Socket Cap Screw)
519	60000415	2	EQ P CUTTER SCREW 1/4 X 1 1/8	60000415 (1/4-20 x 1 1/8 Socket Hd Cap Screw)
520	6000416	3	EQ P CUTTER SCREW 10-32 X 3/4	60000416 (10-32 x 3/4 Fillester Hd Screw)
501-1	60000393	1	EQ P CUTTER BODY 1.500	
501-2	60000394	1	EQ P CUTTER BODY 2.125	
501-3	60000395	1	EQ P CUTTER BODY 2.875	
502-1	60000396	1	EQ P CUTTER UPPER KNIFE BAR 1.500	
502-2	60000397	1	EQ P CUTTER UPPER KNIFE BAR 2.125	
502-3	60000398	1	EQ P CUTTER UPPER KNIFE BAR 2.875	
503-1	60000399	1	EQ P CUTTER GAUGE BAR ANGLE 1.500	
503-2	60001017	1	EQ P CUTTER GAUGE BAR ANGLE 2.125	
503-3	60000400	1	EQ P CUTTER GAUGE BAR ANGLE 2.875	
515-1	60000409	1	EQ P CUTTER UPPER CUTTING KNIFE 1.500	Knife is 1 3/4" long
515-2	60001018	1	EQ P CUTTER UPPER CUTTING KNIFE 2.125	Knife is 2 1/4" long
515-3	60000410	1	EQ P CUTTER UPPER CUTTING KNIFE 2.875	Knife is 3" long
516-1	60000411	1	EQ P CUTTER LOWER CUTTING KNIFE 1.500	Knife is 1 3/4" long
516-2	60001019	1	EQ P CUTTER LOWER CUTTING KNIFE 2.125	Knife is 2 1/4" long
516-3	60000412	1	EQ P CUTTER LOWER CUTTING KNIFE 2.875	Knife is 3" long"

HELMOLD

voestalpine Precision Strip LLC 901 Morse Ave., Elk Grove Village IL 60007-5107 USA
Phone 1-800-344-7138
www.helmold.com

